



The new KNX user interfaces

KNX Push-button Pro / KNX Multitouch Pro

The new KNX user interfaces

KNX Multitouch Pro

KNX Push button Pro

Installation and commissioning

The System Design range

The System M range

Life Is On

Schneider
Electric

The new KNX user interfaces

KNX Multitouch Pro and KNX Push-button Pro



KNX Multitouch Pro: System Design, D-Life Metal, nickel metallic



KNX Push-button Pro: System Design, D-Life anthracite

The new KNX user interfaces

KNX Multitouch Pro and KNX Push-button Pro

- Perfect addition to a modern KNX installation
- User interface is similar to the intuitive and convenient operation of a smartphone or tablet
- Entire array of functions
- Perfect combination of convenience and design



KNX Multitouch Pro



KNX Multitouch Pro

Innovative Design

- The harmonious, contact-sensitive touch screen has a low mounting depth, which means that its placement in the frame is particularly flat – the display and the frame form a seamless unit
- There are no protruding buttons; all functions are selected and directly controlled via the contact-sensitive touch screen

Intelligent operating philosophy

KNX Multitouch Pro

- The function control is similar to that of a smartphone or tablet
- Swiping between main screens (8)
- Direct operation function takes place in the main menu



KNX Multitouch Pro

Flexible and individual

- The unit offers a choice of two interface designs, with vertical or rotary arrangement – or a combination of both.
- The option to customize the screensaver individually is especially practical in the commercial sector.

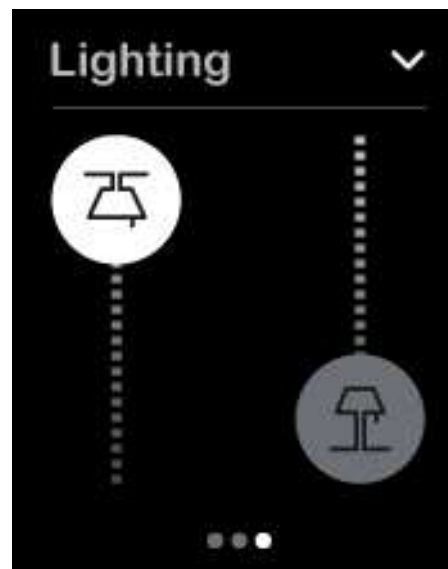


Bild muss noch geändert werden

Life Is On

Schneider
Electric



KNX Multitouch Pro

Proximity sensor and gesture function

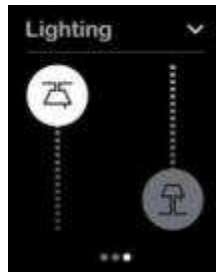
- Thanks to the proximity sensor the display is illuminated by approach
- The gesture function allows to control the most-used function with a hand gesture

Life Is On

Schneider
Electric

KNX Multitouch Pro

User interface



- Two innovative display modes
- Rotary or vertical interface or a combination of both
- Activation and deactivation of features such as hand gesture control, proximity sensor, display brightness and temperature control
- Temperature control in rotary display mode
- The display shows current temperature and desired temperature value



KNX Multitouch Pro

Two levels of control

Temperature main menu

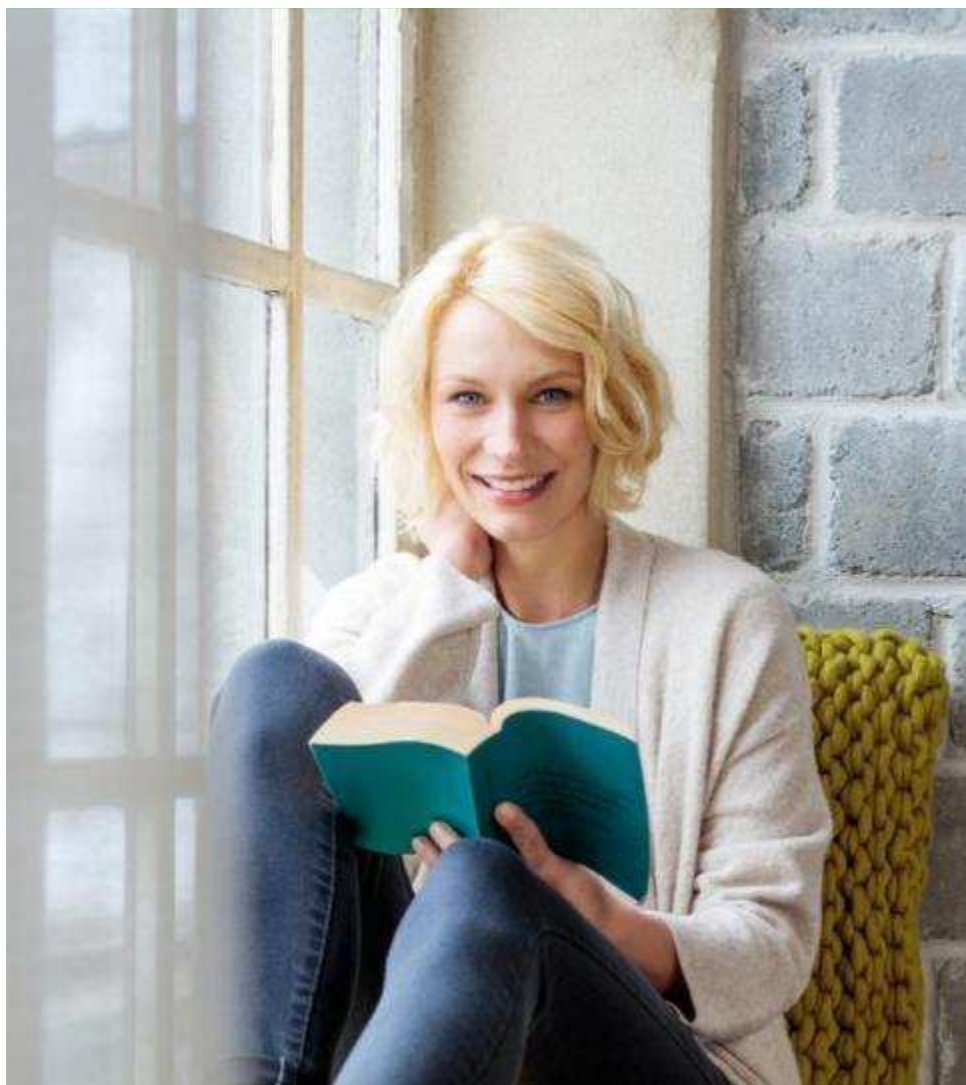


Temperature sub-menu



Life Is On

Schneider
Electric



KNX Multitouch Pro

Two levels of control

Lightning main menu



Lightning sub-menu



Life Is On

Schneider
Electric



KNX Multitouch Pro

Two levels of control

Shutter main menu



Shutter sub-menu



Life Is On

Schneider
Electric

KNX Multitouch Pro

Overview of functions

- ✓ Thermostat with analog input for floor heating sensor
- ✓ Control of light, blind, temperature, and scenario via a contact-sensitive touch screen
- ✓ Rotary display mode: one function per window – up to eight main functions
- ✓ Vertical display mode: up to two functions per window – up to 16 main functions
- ✓ Scenario control: up to four scenarios per window – up to 32 scenarios
- ✓ Lock/unlock: protection against unwanted access – with four-digit number code required for unlocking
- ✓ Proximity sensor: display illumination is automatically activated upon approach
- ✓ Gesture function: controls one previously defined function through the use of a specific touchless gesture
- ✓ Customizable screensaver for example company's logo

KNX Multitouch Pro

Main Benefits

Available in two sizes

- System M: 55mm x 55mm
- System Design: 71mm x 71mm

Only one ref. per range

- Faster to projects
- Easier selection
- Stock reduction

Easy installation

- Only bus consumption
- No extra devices



Touch display

- Visible by proximity
- Night mode
- Visual status indication
- Screensaver (company logo)
- Slider interaction

Temperature control

- Built-in temperature sensor
- Input for floor temperature heating sensor
- Thermostat function
- Two temperature values at the same time

KNX Push-button Pro



Copyright by Schneider Electric Page 17



KNX Push-button Pro

High quality Design

- Quality design and intuitive operability
- Flexible functionality
- Flat construction design
- Conventional design

Life Is On

Schneider
Electric

KNX Push-button Pro

Sophisticated ambience

High-quality design

- The convenience and flexibility of the KNX Multitouch Pro range is replicated by the KNX Push-button Pro, which also dispenses entirely with individual buttons
- The KNX Pushbutton Pro control surface sits particularly flat in the frame, so the user interface and frame form a harmonious unit

Translucent sensor cover

- The individual touch-sensitive zones of the sensor cover are displayed using illuminated function icons that shine through the translucent surface and emphasize the high-quality look of the new push-button
- The sensor cover is available in all the colors of the System M and System Design ranges

Functionality for room control

- The KNX Push-Button Pro can control up to four lighting, shutter and scene functions
- In combination with the KNX Multi-Touch Pro, it offers the perfect solution for intuitive, flexible room control in both residential and commercial applications

KNX Push-button Pro



KNX Push-button Pro: System Design, D-Life



KNX Push-button Pro: System M

KNX Push-button Pro

Flexible in form and functionality

- The new KNX Push-button Pro ensures maximum flexibility in every phase of planning and project design.
- The allocation of function type and numbers can be specified and altered at any stage in the installation process
- Only one interface is required – it can be equipped with up to four functions for lighting, shutter and scene control
- There is no need to replace the interface when functions are altered– when subsequent changes are made to a room set-up, functions can be redefined in the ETS software and the respective symbols on the sensor cover can be replaced.



2 functions, light and blind

KNX Push-button Pro

Illuminated function symbol

- Clear, intuitive symbols make the KNX Pushbutton Pro easy to operate
- A variety of symbol foils are available to indicate lighting, shutter and scene controls
- They can be individually combined to suit specific requirements
- All the symbols are backlit and indicate status
- They offer a choice between two shades of white or a white and green status indicator



3 functions, light and blind and scenario

KNX Push-button Pro

Night mode and proximity sensor

- Thanks to the KNX Push-button Pro's integrated proximity sensor, symbols remain invisible until a user approaches
- The backlit symbols enable quick orientation and allow for clear and intuitive operation of the interface
- Symbols are not visible in quiet mode, so the push-button has the appearance of an elegant, flat surface.
- The proximity sensor can be deactivated if continuous illumination is required.
- The brightness of the illuminated symbols can be reduced in night mode
- Time-specific programming in ETS or as a scene can be defined on the push-button and called up manually at any time

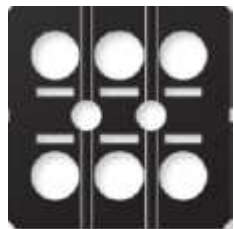


4 functions, light and blind

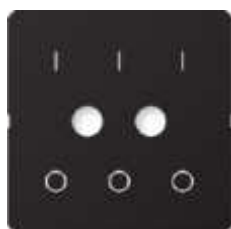
KNX Push-button Pro

Icon foils for all functions

Carrier foil



Finished foils



Individual symbols for use with carrier foil



- Foil with standard symbols already installed
- Additional foils with most usual combinations are included
- Carrier and foils with additional individual symbols are available

KNX Push-button Pro

Overview of functions

- ✓ Control of lights, blinds and scenarios via one sensor cover
- ✓ Intuitive and simple operation thanks to illuminated status color
- ✓ Back-lit: two shades of white or white and green
- ✓ Flexible allocation of sensor zones
- ✓ Proximity sensor: display illumination triggered by approach
- ✓ Express commissioning for rapid programming
- ✓ Group addresses are retained even when the position of each function is changed

KNX Push-button Pro

Main Benefits

Set of predefined icons

- Lamps, Shutters, Scenes
- House, hotel, offices
- Easier to install
- Interchangeable

Available in two ranges

- System M (4 colors)
- System Design (7 colors)

Only one ref. per color

- Faster to projects
- Easier selection
- Stock reduction



Flexibility by software

- 1 to 4 rockers with same device
- Easy changes after installation

Express commissioning

- Select the function and go
- Most used functions in one view

Hidden icons

- Backlit by proximity
- 2 colors for status feedback
- Night mode
- Energy efficiency



Installation and commissioning



Installation and commissioning

Simpler, faster and more flexible

- Only two references are required for a simple KNX installation of all rooms
- The desired functions can be implemented at the time of commissioning
- Express commissioning feature enables rapid project design
- Frequently-used functions are predefined in the ETS application
- The position of the functions can be modified any time
- No additional power supply is needed

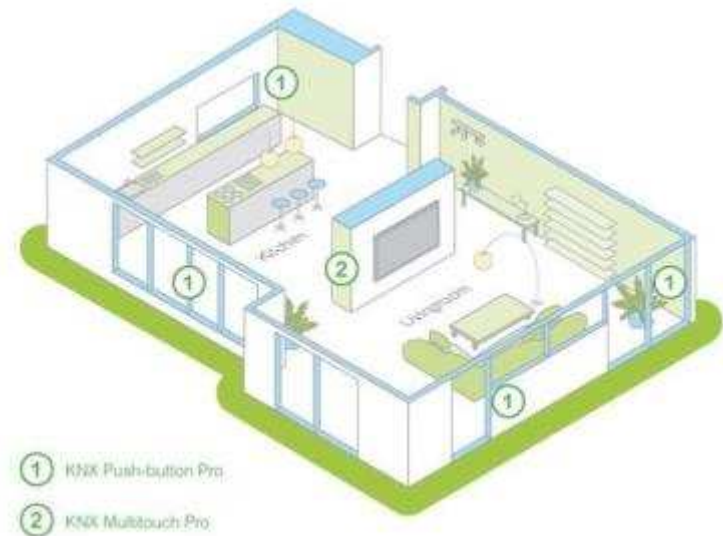


Installation and commissioning

High-class room-control

Two innovative user interfaces which fulfill together all requirements for a functional room control solution

- Usable for homes, offices and hotels
- Installation of the Multitouch Pro, room by room by a central point of control
- Installation of the KNX Push-button Pro in additional areas



High-class room-control

Installation and commissioning

The System Design range

Integrating the new KNX user interface

D-Life Thermoplast



D-Life Thermoplastic, lotus white

D-Life Thermoplastic, lotus white

D-Life Thermoplastic, sahara

D-Life Thermoplastic, anthracite

D-Life Thermoplastic, stainless steel

D-Life Glass and Stone



D-Life Glass, crystal white

D-Life Glass, crystal white

D-Life Glass, onyx black

D-Life Stone, slate polished

D-Life Metal



D-Life Metal, nickel metallic

D-Life Metal, nickel metallic

D-Life Metal, champagne metallic

D-Life Metal, mocca metallic

- The new System Design line D-Life, features a new and basic geometry
- Maximum space - minimum frame. Discreet without a central bridge piece

The System M range

Integrating the new KNX user interface

M-Pure, M-Pure Decor



M-Pure Decor, slate



M-Pure, active white



M-Pure, polar white



M-Pure, aluminum



M-Pure, anthracite

M-Elegance, M-Plan



M-Elegance, Real glass,
onyx black



M-Elegance, Solid wood,
beech/active white



M-Elegance, Metal,
platinum silver/polar white



M-Plan, aluminum



M-Plan, anthracite

M-Smart, M-Creativ



M-Smart, polar white



M-Smart, active white



M-Smart, polar white



M-Creativ, interchangeable
frame with red inlay



M-Creativ, interchangeable
frame with golden inlay

- Functional perfection from a system whose combination possibilities awarded to numerous design awards – this is System M
- Available in six different designs
- System M delivers maximum flexibility.

Life Is On

Schneider
Electric

Life Is On

Schneider
Electric